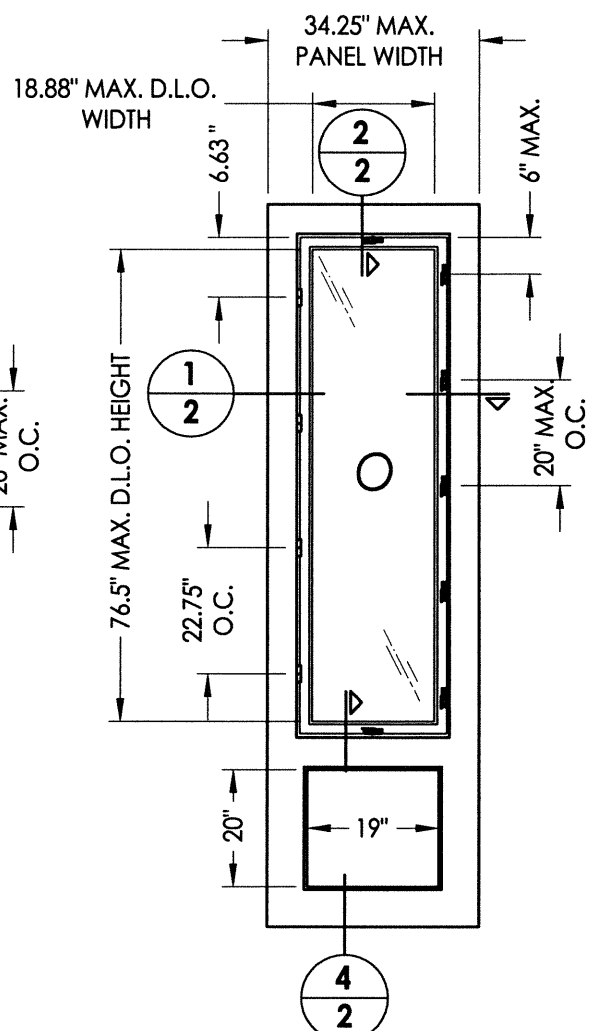
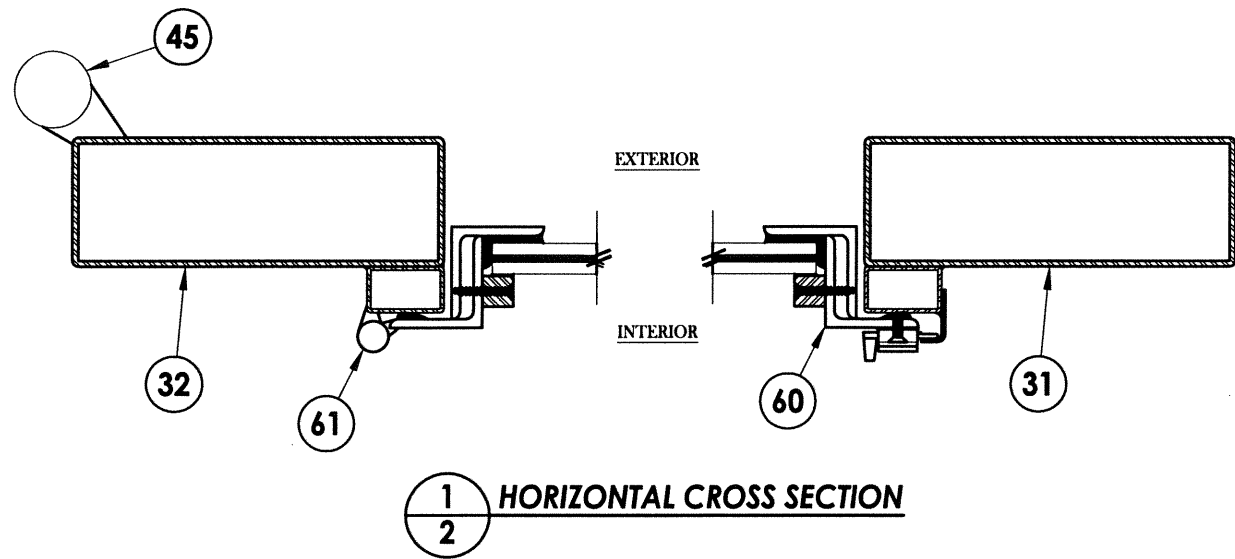


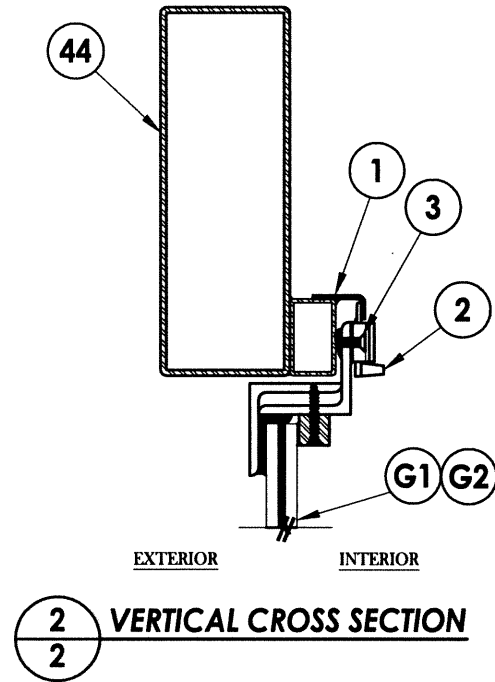
30 DOOR PANEL
w/ Operable Sash



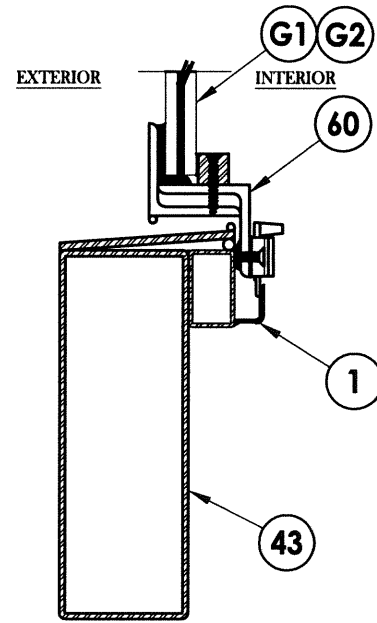
40 3/4 LITE DOOR PANEL
w/ Operable Sash



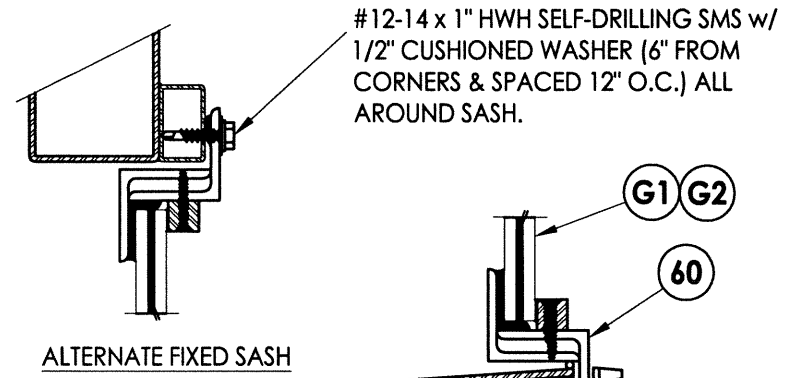
1 HORIZONTAL CROSS SECTION



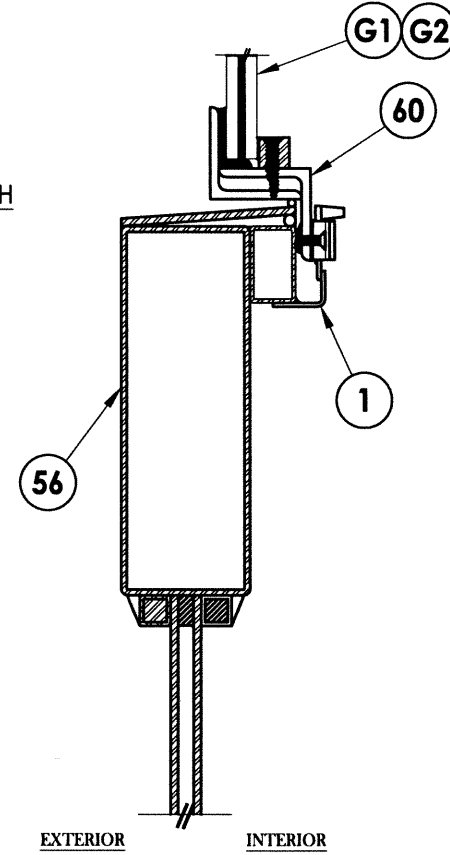
2 VERTICAL CROSS SECTION



3 VERTICAL CROSS SECTION



ALTERNATE FIXED SASH



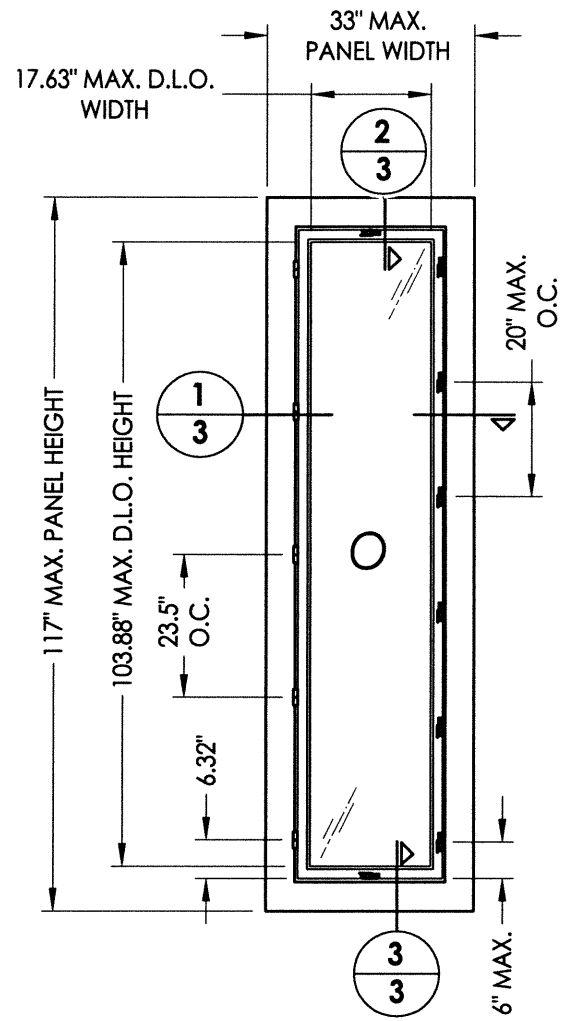
4 VERTICAL CROSS SECTION

PRODUCT: CLARK HALL IRON DOORS

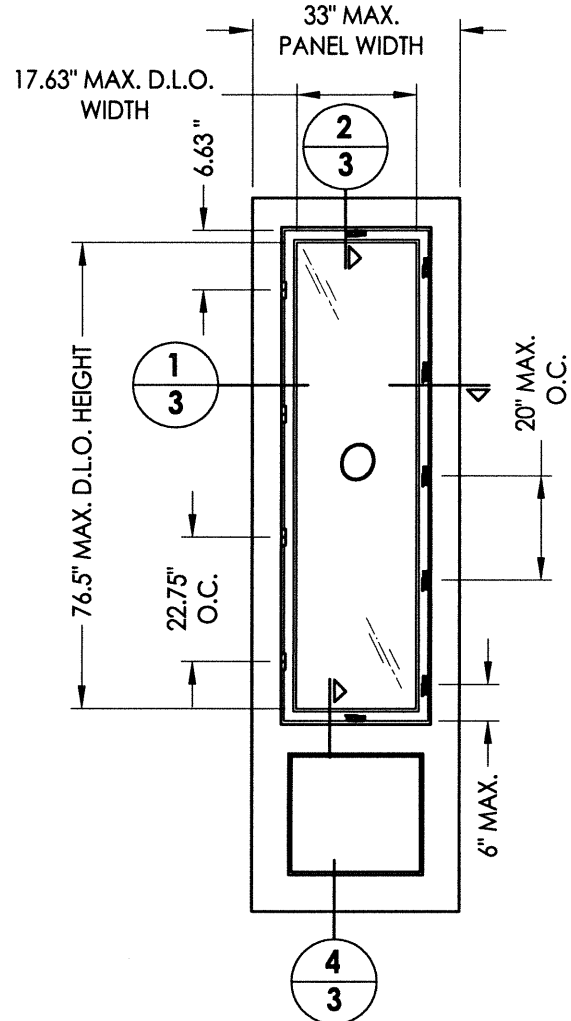
PART OR ASSEMBLY: DOOR PANEL DETAILS

DATE: 11/8/13
SCALE: N.T.S.
DWG. BY: JK
CHK. BY: LFS
DRAWING NO.: FL-16663.15
SHEET 2 OF 12

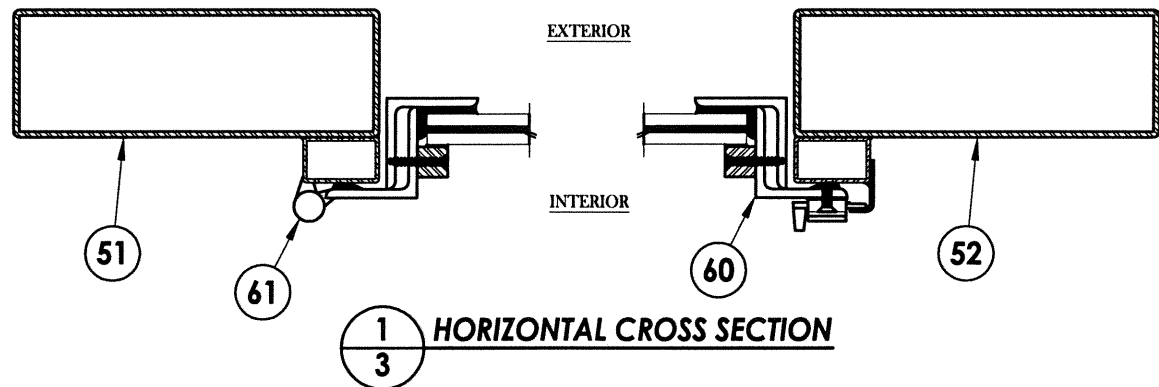
Documents Prepared By:
RW BUILDING CONSULTANTS, INC.
P.O. Box 230 Valrico FL, 33595
Phone No.: 813.659.9197
Florida Board of Professional Engineers
Certificate Of Authorization No. 9813
LFS
Lyndon F. Schmidt, P.E. No. 43409



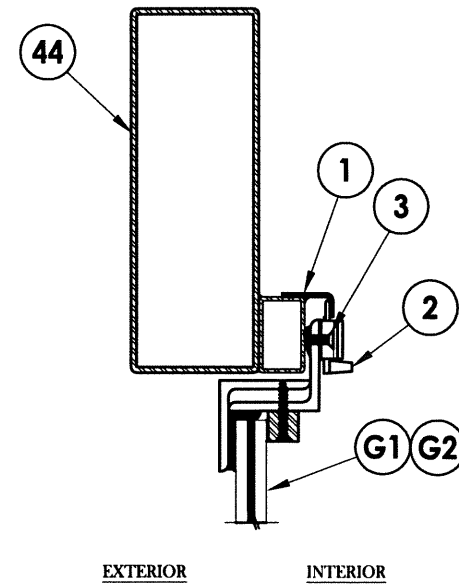
50 SIDELITE PANEL
w/ Operable Sash



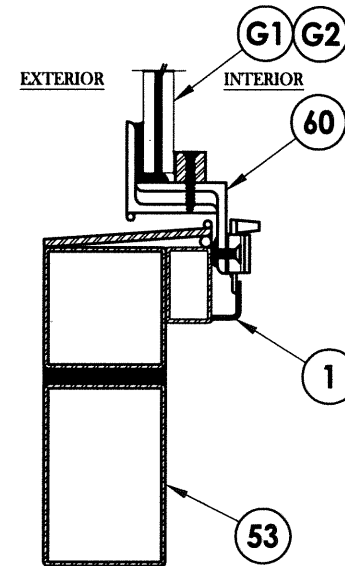
55 3/4 SIDELITE PANEL
w/ Operable Sash & Fixed Panel



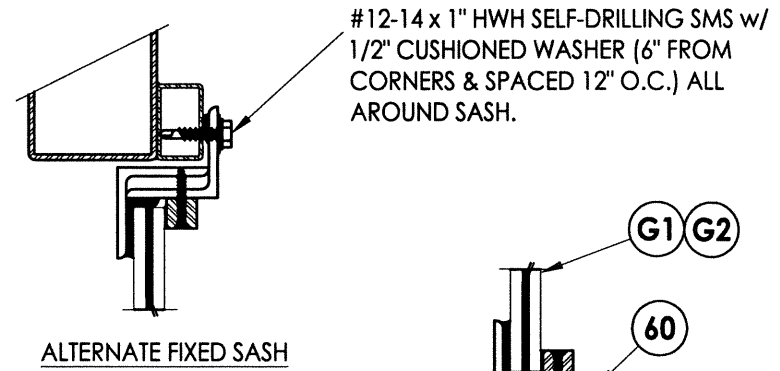
1 HORIZONTAL CROSS SECTION



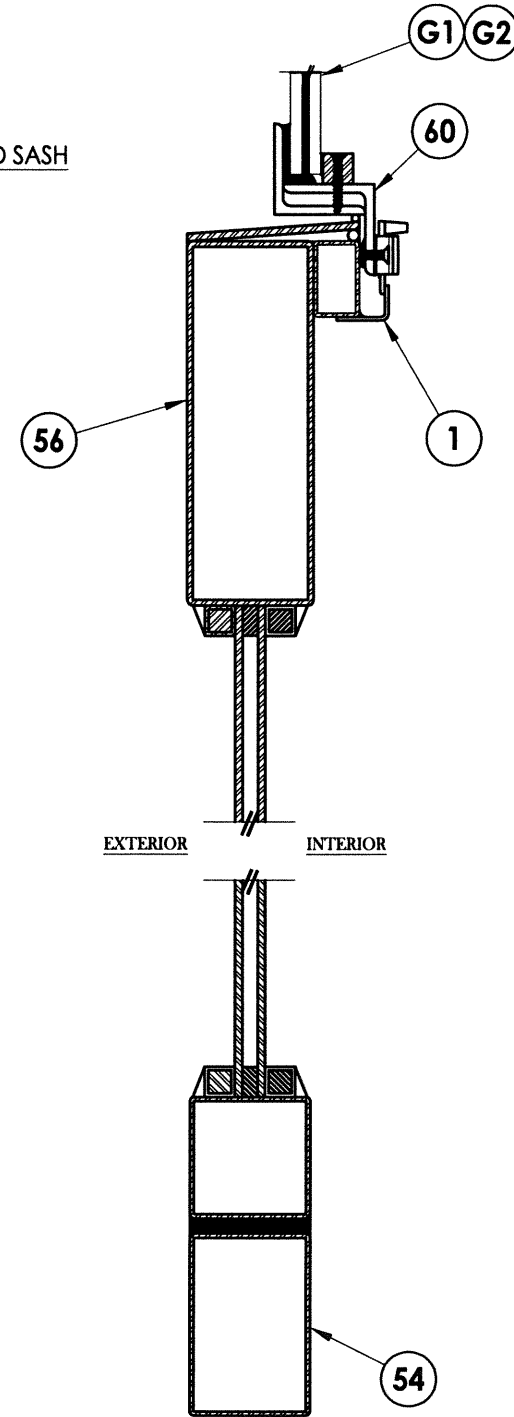
2 VERTICAL CROSS SECTION



3 VERTICAL CROSS SECTION



ALTERNATE FIXED SASH



4 VERTICAL CROSS SECTION

Documents Prepared By:

R.W. BUILDING CONSULTANTS, INC.
P.O. Box 230 Valrico FL, 33595
Phone No.: 813.659.9197
Florida Board of Professional Engineers
Certificate Of Authorization No. 9813
17-12-30-17

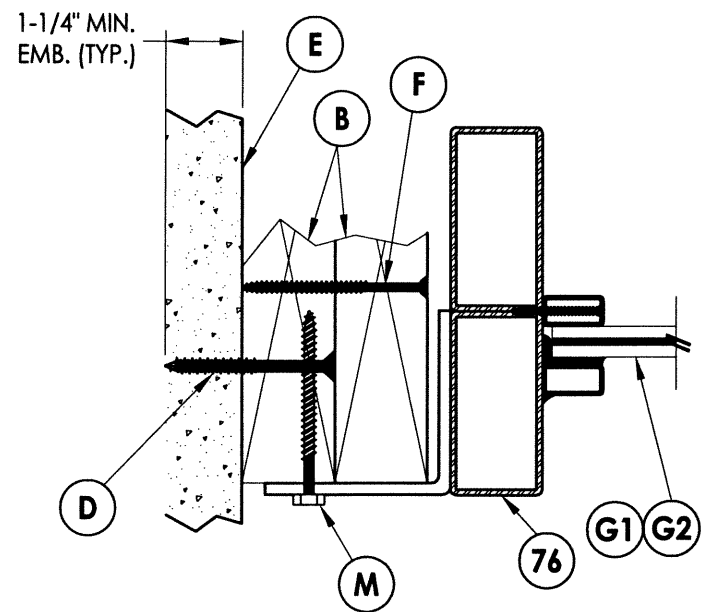
Lyndon F. Schmidt, P.E. No. 43409

PRODUCT: CLARK HALL IRON DOORS

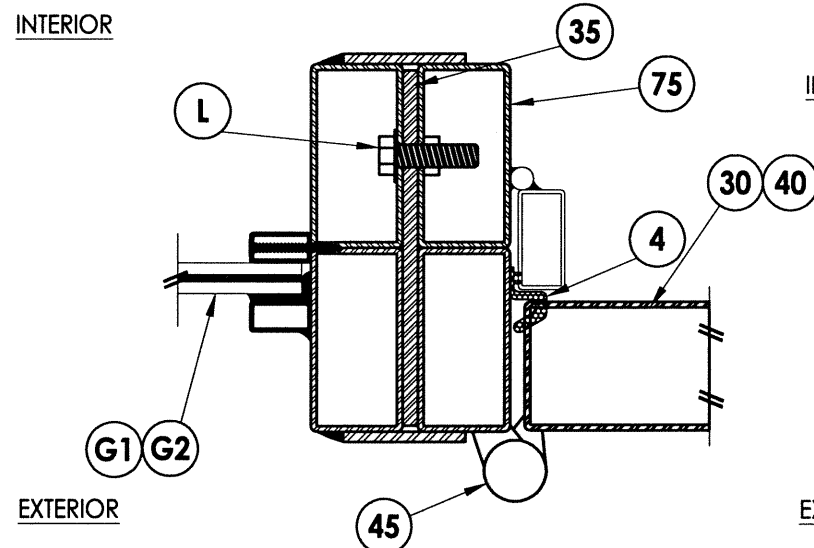
PART OR ASSEMBLY: SIDELITE PANEL DETAILS

NO.	DATE	BY

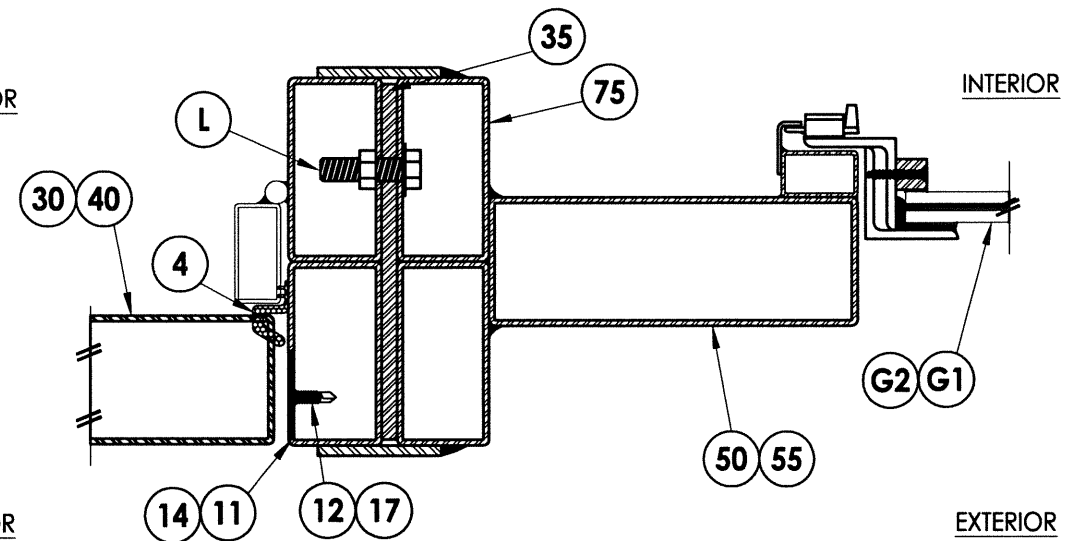
DATE: 11/8/13
SCALE: N.T.S.
DWG. BY: JK
CHK. BY: LFS
DRAWING NO.: FL-16663.15
SHEET 3 OF 12



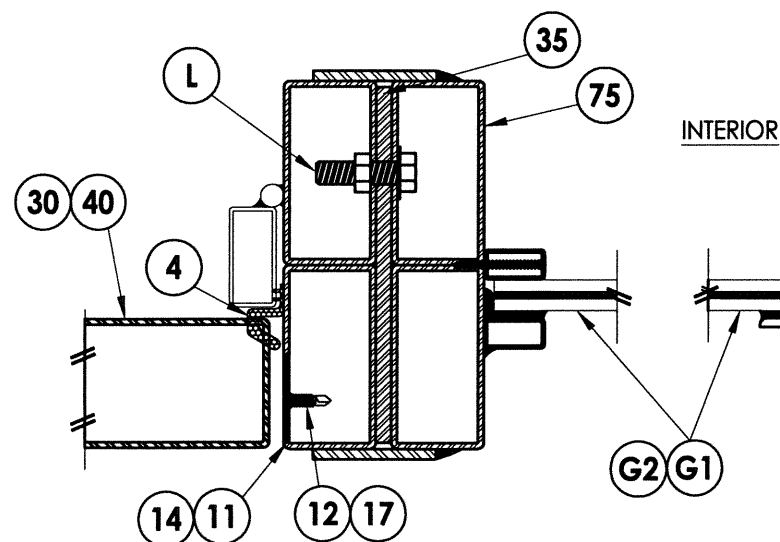
1 HORIZONTAL CROSS SECTION
6 Outswing Shown (Inswing Similar)



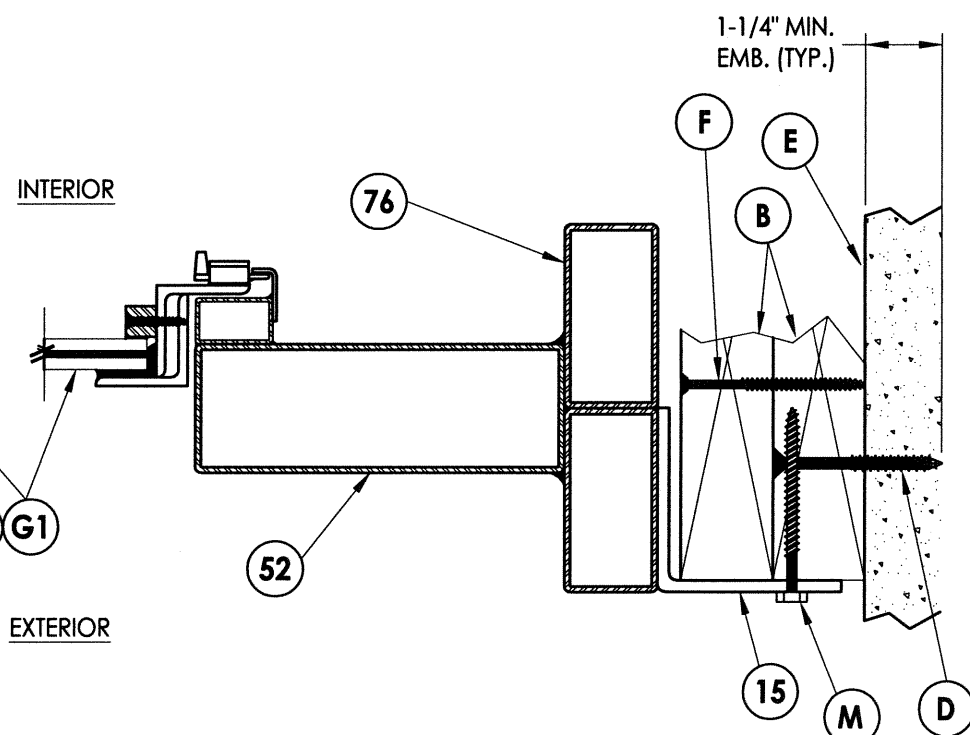
2 HORIZONTAL CROSS SECTION
6 Outswing Shown (Inswing Similar)



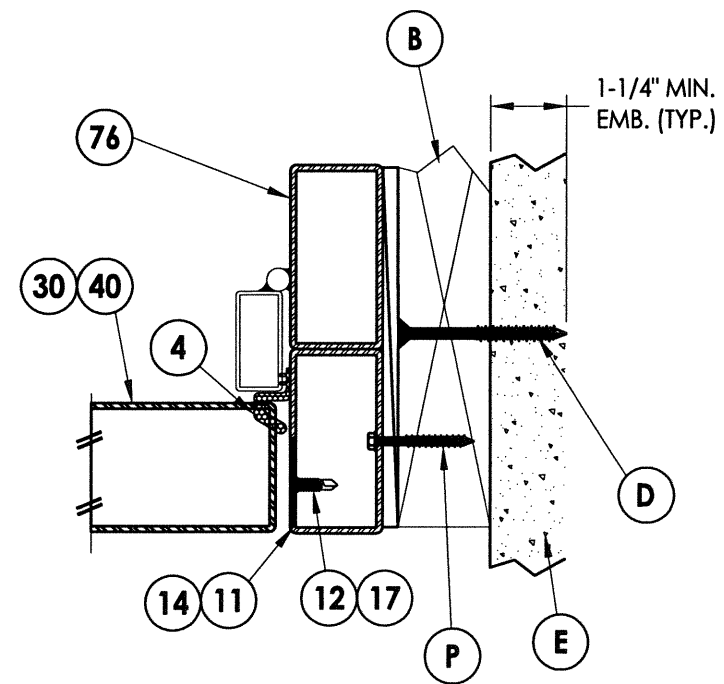
4 HORIZONTAL CROSS SECTION
6 Outswing Shown (Inswing Similar)



3 HORIZONTAL CROSS SECTION
6 Outswing Shown (Inswing Similar)



5 HORIZONTAL CROSS SECTION
6 Outswing Shown (Inswing Similar)



6 HORIZONTAL CROSS SECTION
6 Shown w/ Optional Through the Frame Anchoring

Documents Prepared By:

RW BUILDING CONSULTANTS, INC.
 P.O. Box 230 Valrico FL 33595
 Phone No.: 813.659.9197
 Florida Board of Professional Engineers
 Certificate of Authorization No. 9813
 LFS 12.30.13
 Lyndon F. Schmidt, P.E. No. 43409

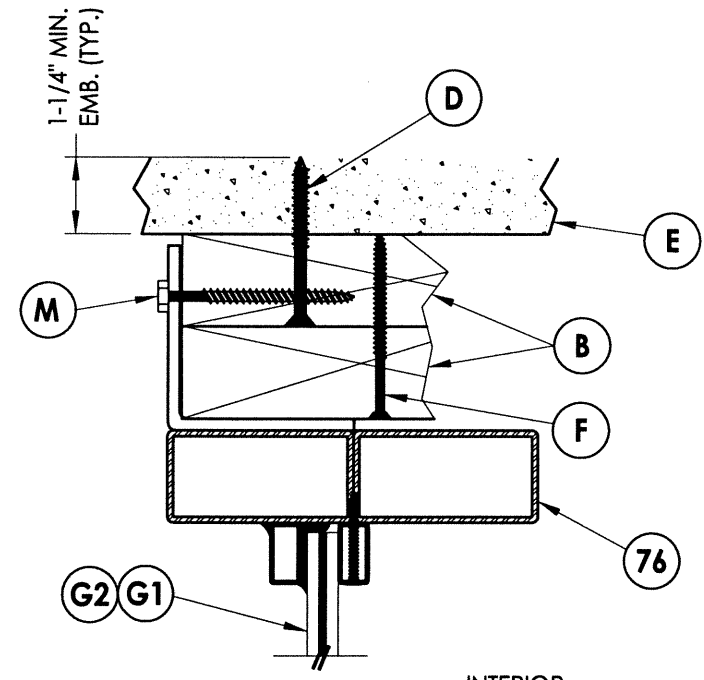
PRODUCT:
 CLARK HALL IRON DOORS

PART OR ASSEMBLY:
 HORIZONTAL
 CROSS SECTIONS

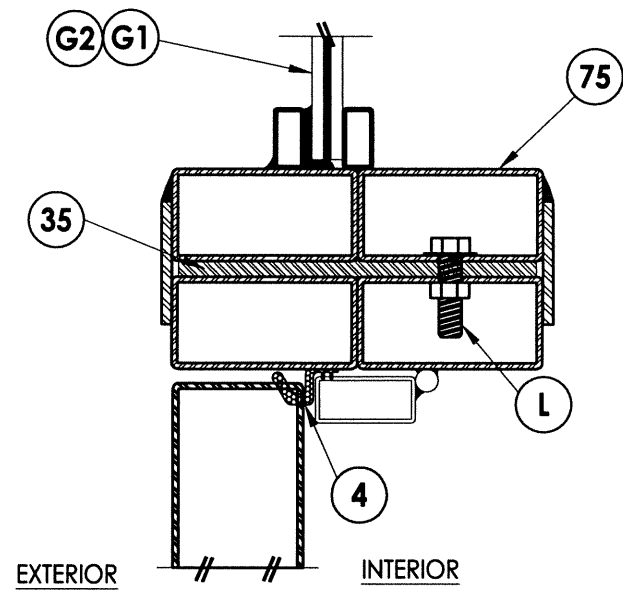
NO.	DATE	BY

DATE: 11/8/13
 SCALE: N.T.S.
 DWG. BY: JK
 CHK. BY: LFS
 DRAWING NO.:
 FL-16663.15
 SHEET 6 OF 12

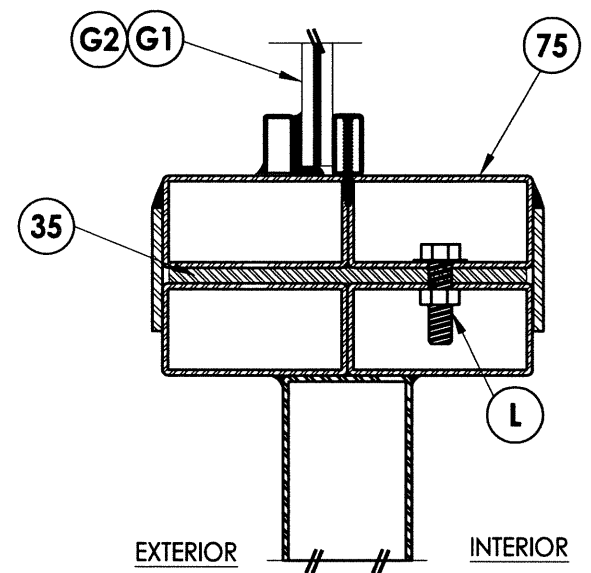
R:\A - Projects\Project Folders\Proj 1701 - 1800\PF 1733\D. RWBC Drawings\FL-16663.13-15.dwg, 3.7



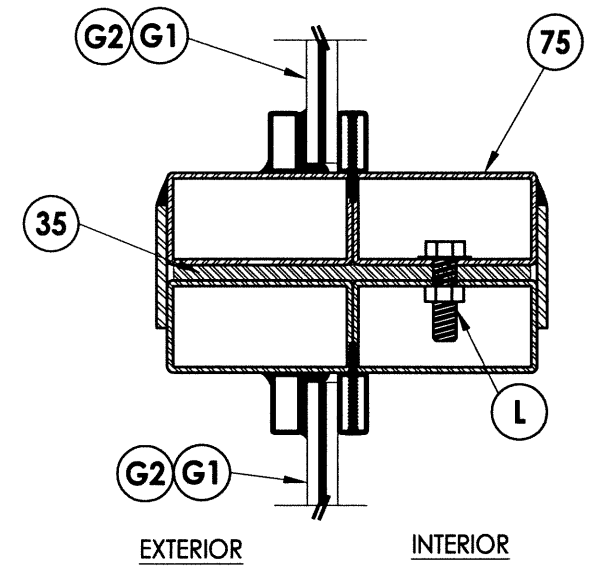
1
7 **VERTICAL CROSS SECTION**
Outswing Shown (Inswing Similar)



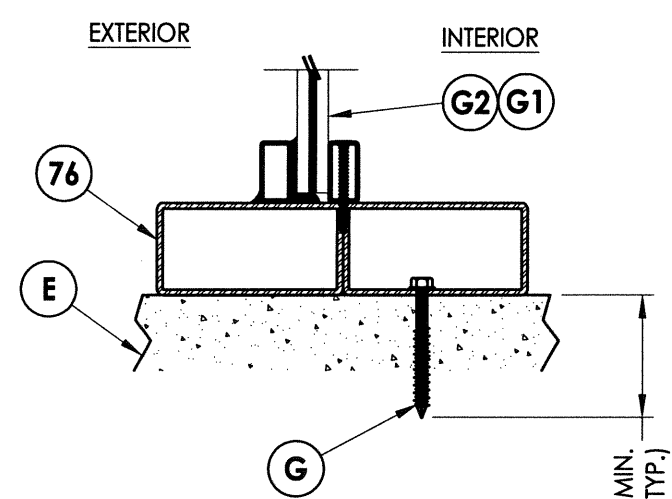
2
7 **VERTICAL CROSS SECTION**
Outswing Shown (Inswing Similar)



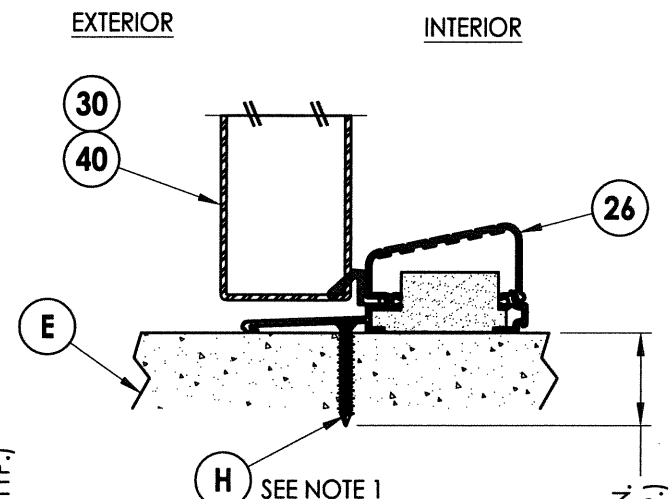
3
7 **VERTICAL CROSS SECTION**
Outswing Shown (Inswing Similar)



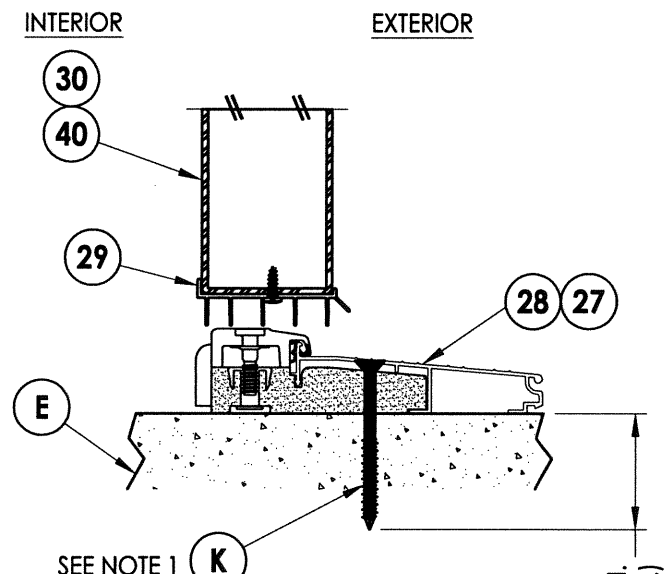
4
7 **VERTICAL CROSS SECTION**
Outswing Shown (Inswing Similar)



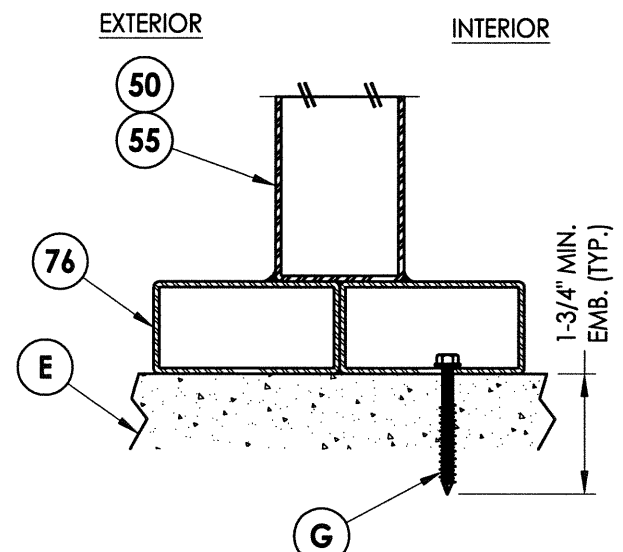
5
7 **VERTICAL CROSS SECTION**
Outswing Shown (Inswing Similar)



6
7 **VERTICAL CROSS SECTION**
Outswing Sill



7
7 **VERTICAL CROSS SECTION**
Inswing Sill



8
7 **VERTICAL CROSS SECTION**
Outswing Shown (Inswing Similar)

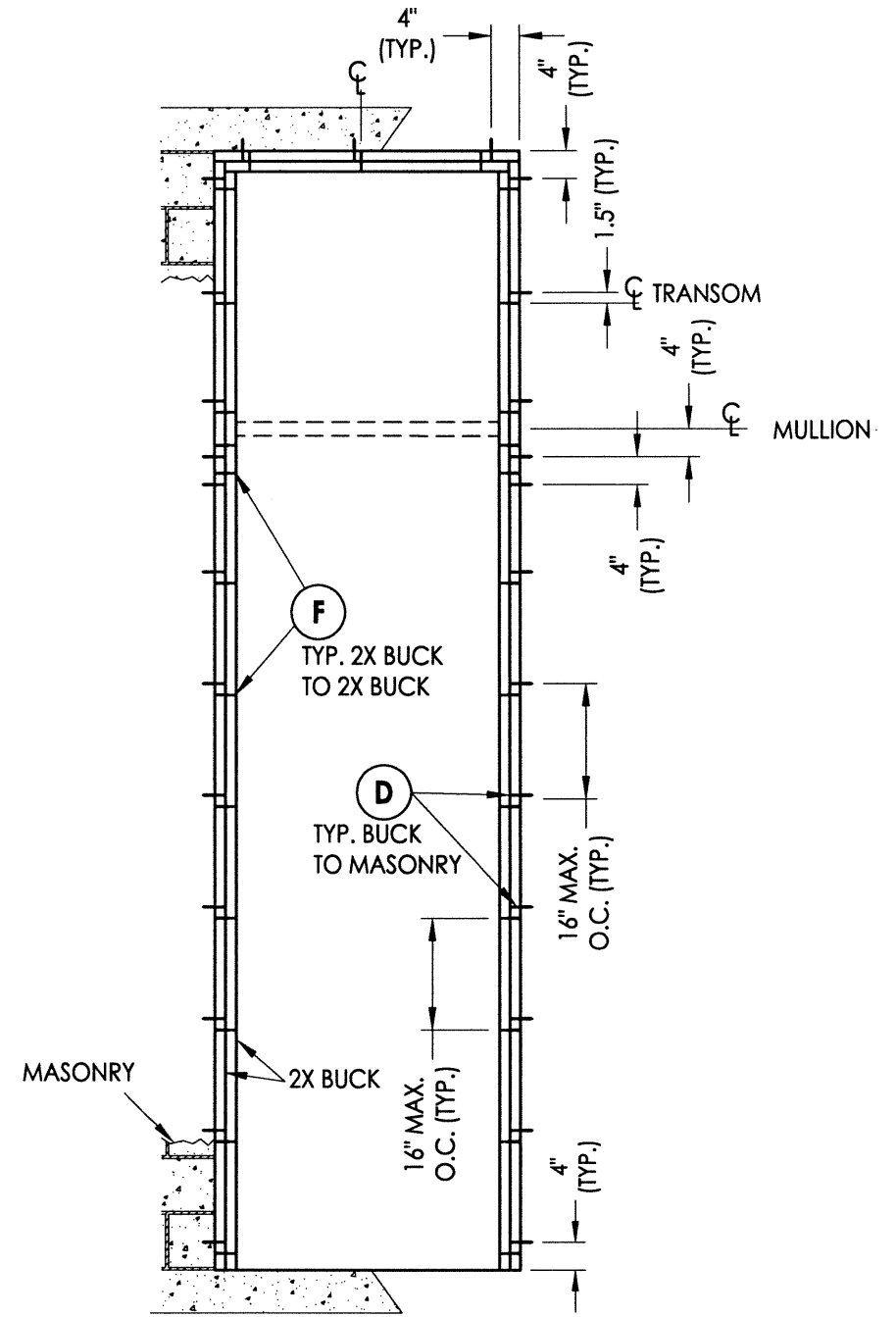
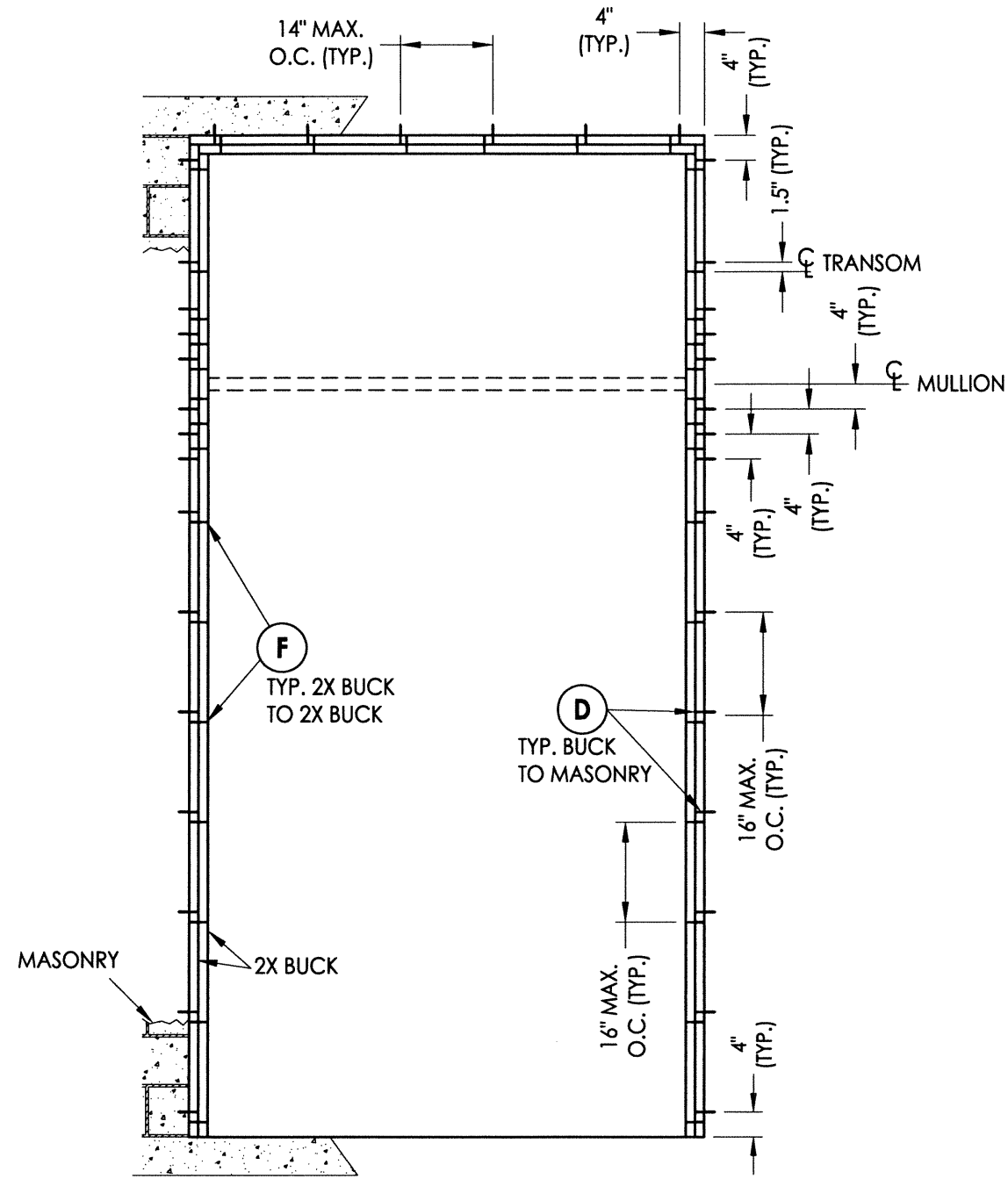
NOTE:
1. Sill anchor is not required for Single Door w/ Transom (O/X).

Documents Prepared By:
RW BUILDING CONSULTANTS, INC.
P.O. Box 230 Valrico FL, 33595
Phone No.: 813.659.9197
Florida Board of Professional Engineers
Certificate Of Authorization No. 9813
L7 PL-12-30-17
Lyndon F. Schmidt, P.E. No. 43409

PRODUCT: CLARK HALL IRON DOORS
PART OR ASSEMBLY: VERTICAL CROSS SECTIONS

NO.	DATE	BY	REVISIONS

DATE: 11/8/13
SCALE: N.T.S.
DWG. BY: JK
CHK. BY: LFS
DRAWING NO.: FL-16663.15
SHEET 7 OF 12



BUCK ANCHORING

$\frac{O}{OXO}$, $\frac{O}{OX}$, $\frac{O}{XO}$

BUCK ANCHORING

$\frac{O}{X}$

NOTE FOR THROUGH THE FRAME ANCHORING ONLY ONE 2X BUCK IS REQUIRED, ANCHORED AS SHOWN.

CONCRETE ANCHOR NOTES:

1. Concrete anchor locations at the corners may be adjusted to maintain the min. edge distance to mortar joints.
2. Concrete anchor locations noted as "MAX. ON CENTER" must be adjusted to maintain the min. edge distance to mortar joints, additional concrete anchors may be required to ensure the "MAX. ON CENTER" dimension are not exceeded.
3. Concrete anchor table:

ANCHOR TYPE	ANCHOR SIZE	MIN. EMBEDMENT	MIN. CLEARANCE TO MASONRY EDGE	MIN. CLEARANCE TO ADJACENT ANCHOR
ITW TAPCON®	1/4"	1-1/4"	2-1/2"	4"
ELCO ULTRACON®	1/4"	1-1/4"	2-1/2"	4"

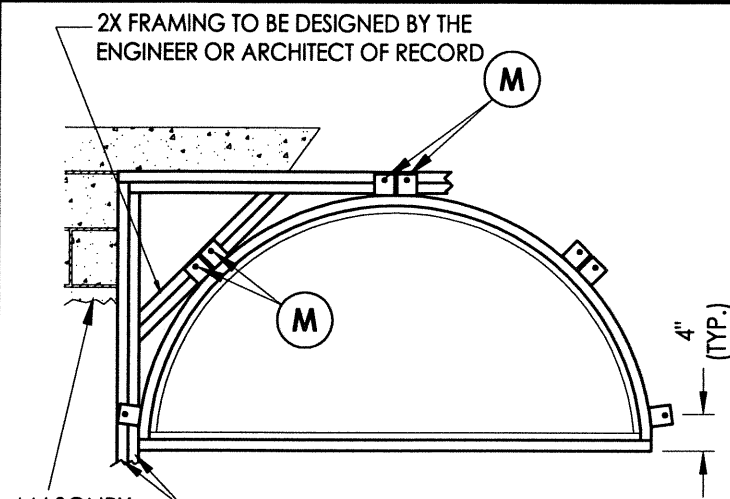
Documents Prepared By:
RW BUILDING CONSULTANTS, INC.
 P.O. Box 230 Valrico FL 33595
 Phone No.: 813.659.9197
 Florida Board of Professional Engineers
 Certificate Of Authorization No. 9813
 27-Fe-12-30-13
 Lyndon F. Schmidt, P.E. No. 43409

PRODUCT: CLARK HALL IRON DOORS
 PART OR ASSEMBLY: BUCK ANCHORING

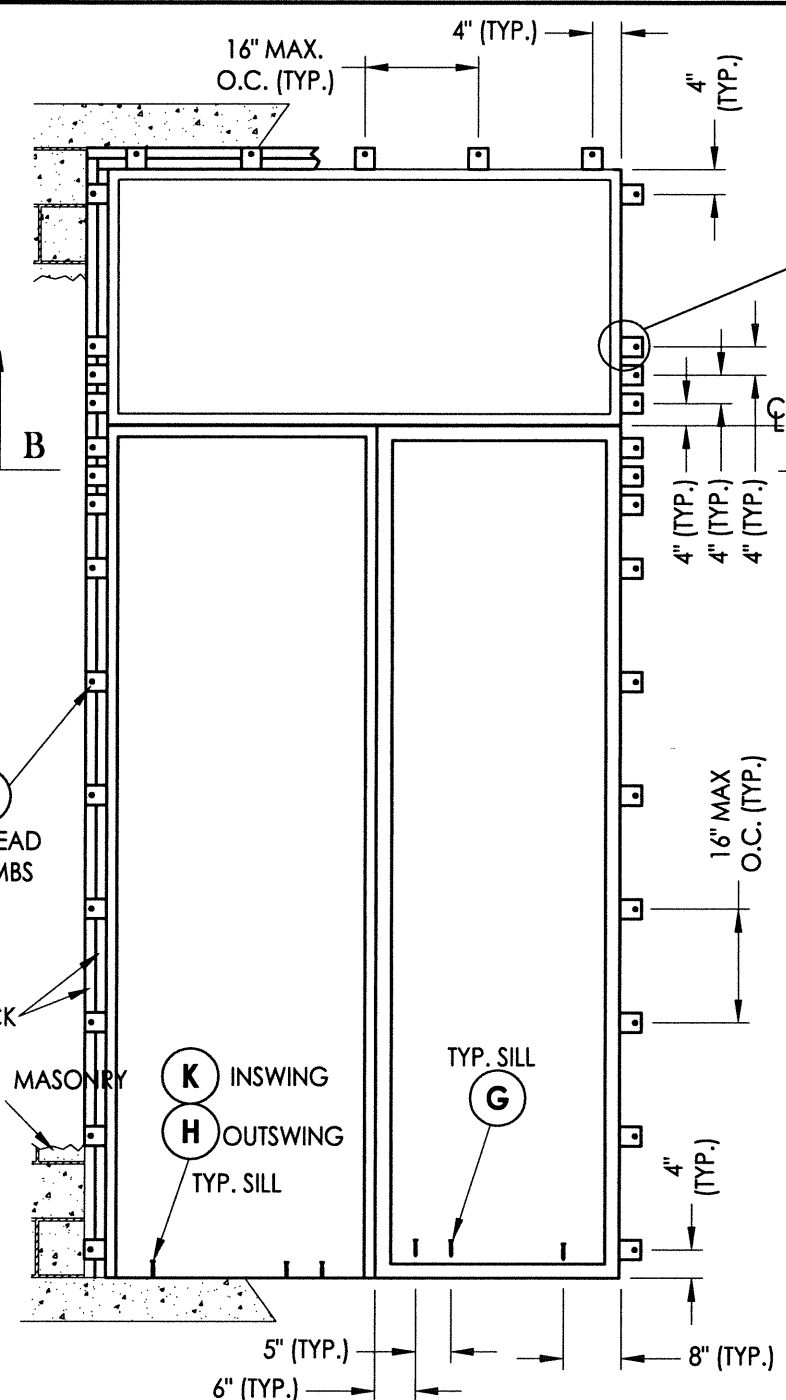
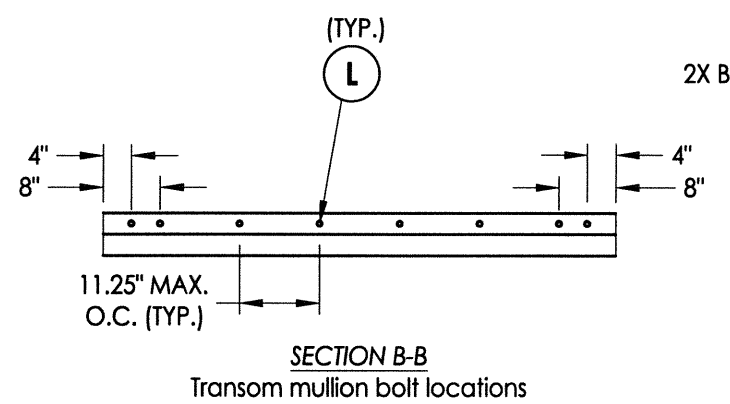
NO.	DATE	BY

DATE: 11/8/13
 SCALE: N.T.S.
 DWG. BY: JK
 CHK. BY: LFS
 DRAWING NO.: FL-16663.15
 SHEET 8 OF 12

R:\A - Projects\Project Folders\Proj 1701 - 1800\PF 1733D. RWBC Drawings\FL-16663.13-15.dwg, 3.9

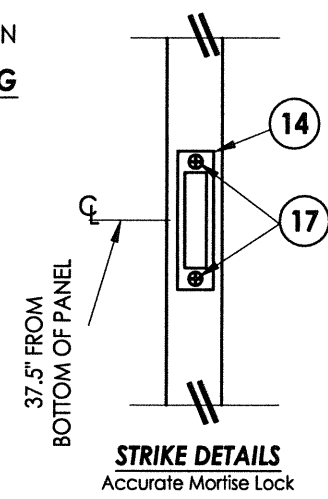


FRAME ANCHORING
ARCH TOP TRANSOM

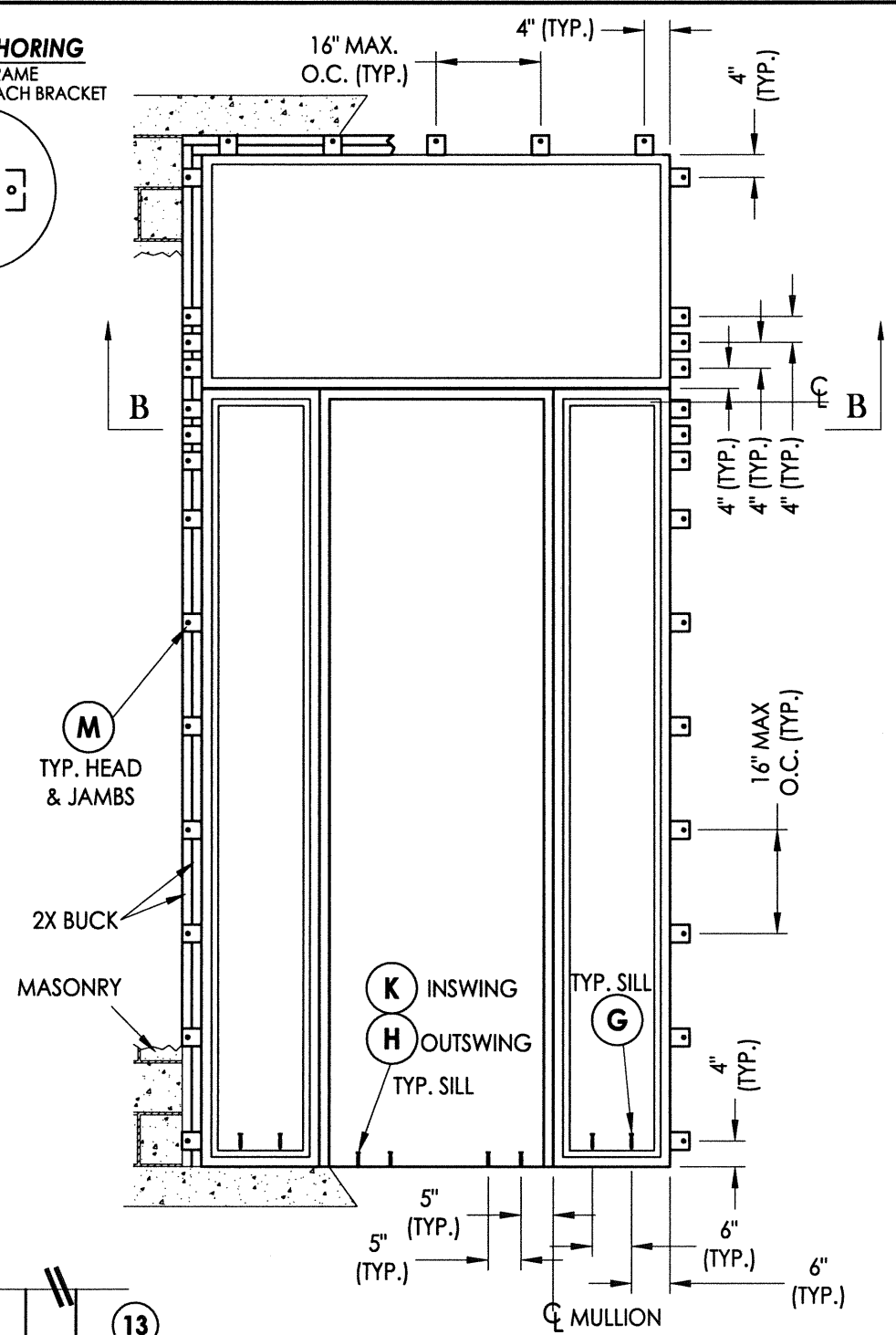
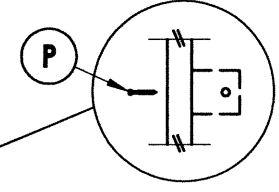


FRAME ANCHORING

$\frac{O}{OX}$ or $\frac{O}{XO}$

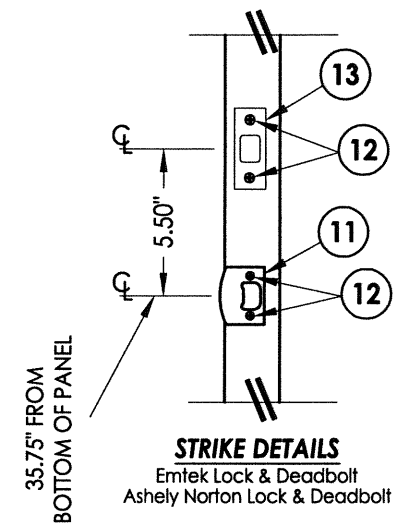


ALTERNATE ANCHORING
THROUGH THE FRAME
SUBSTITUTE ANCHOR @ EACH BRACKET



FRAME ANCHORING

$\frac{O}{OXO}$



CONCRETE ANCHOR NOTES:

- Concrete anchor locations at the corners may be adjusted to maintain the min. edge distance to mortar joints.
- Concrete anchor locations noted as "MAX. ON CENTER" must be adjusted to maintain the min. edge distance to mortar joints, additional concrete anchors may be required to ensure the "MAX. ON CENTER" dimension are not exceeded.
- Concrete anchor table:

ANCHOR TYPE	ANCHOR SIZE	MIN. EMBEDMENT	MIN. CLEARANCE TO MASONRY EDGE	MIN. CLEARANCE TO ADJACENT ANCHOR
ITW TAPCON®	3/16"	1-1/4"	3"	2-1/2"
	1/4"	1-1/4"	2-1/2"	4"
	5/16" (XL)	1-3/4"	2-1/2"	5"
ELCO ULTRACON®	1/4"	1-1/4"	2-1/2"	4"
	5/16"	1-3/4"	2-1/2"	5"

Documents Prepared By:

BUILDING CONSULTANTS, INC.
P.O. Box 230 Valrico FL 33595
Phone No.: 813.659.9197
Florida Board of Professional Engineers
Certificate Of Authorization No. 9813
172123017
Lyndon F. Schmidt, P.E. No. 43409

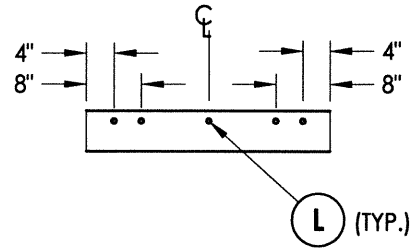
PRODUCT: CLARK HALL IRON DOORS

PART OR ASSEMBLY: FRAME ANCHORING

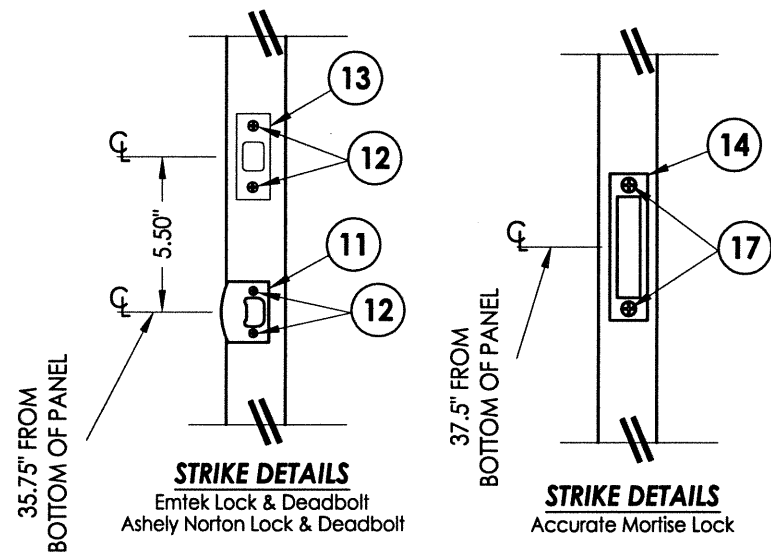
NO.	DATE	BY

DATE: 11/8/13
SCALE: N.T.S.
DWG. BY: JK
CHK. BY: LFS
DRAWING NO.: FL-16663.15
SHEET 9 OF 12

© 2013 R.W. BUILDING CONSULTANTS INC.

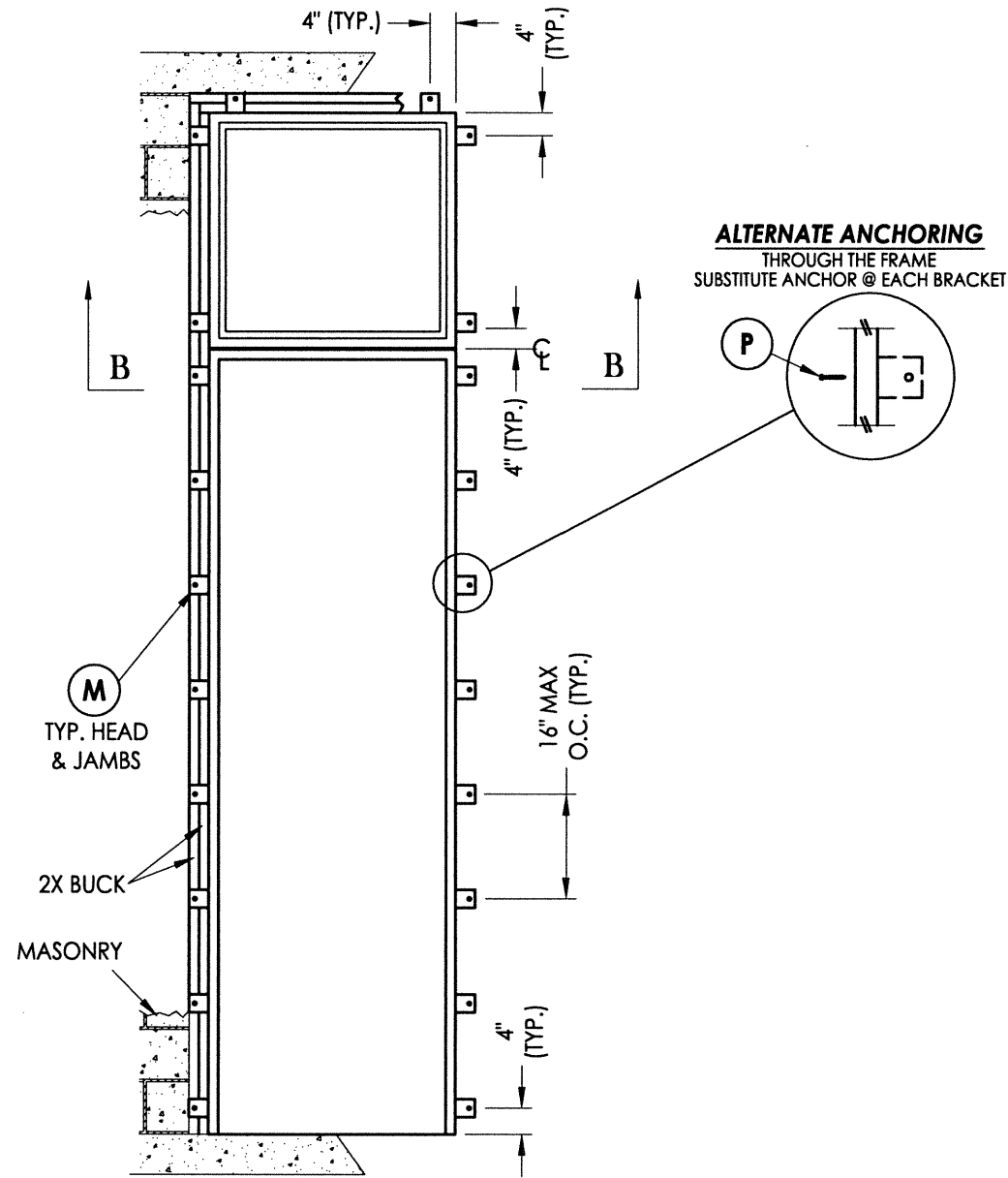


SECTION B-B
Transom mullion bolt locations



35.75" FROM BOTTOM OF PANEL
STRIKE DETAILS
Emtek Lock & Deadbolt
Ashely Norton Lock & Deadbolt

37.5" FROM BOTTOM OF PANEL
STRIKE DETAILS
Accurate Morrise Lock



FRAME ANCHORING

O
X

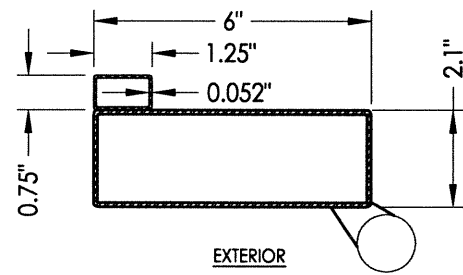
CONCRETE ANCHOR NOTES:

1. Concrete anchor locations at the corners may be adjusted to maintain the min. edge distance to mortar joints.
2. Concrete anchor locations noted as "MAX. ON CENTER" must be adjusted to maintain the min. edge distance to mortar joints, additional concrete anchors may be required to ensure the "MAX. ON CENTER" dimension are not exceeded.
3. Concrete anchor table:

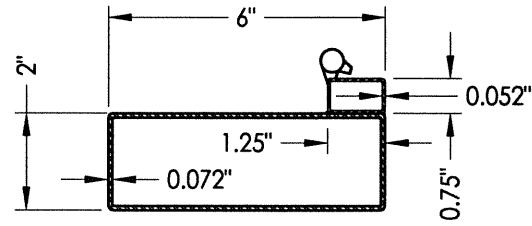
ANCHOR TYPE	ANCHOR SIZE	MIN. EMBEDMENT	MIN. CLEARANCE TO MASONRY EDGE	MIN. CLEARANCE TO ADJACENT ANCHOR
ITW TAPCON®	1/4"	1-1/4"	2-1/2"	4"
ELCO ULTRACON®	1/4"	1-1/4"	2-1/2"	4"

Documents Prepared By:
RW BUILDING CONSULTANTS, INC.
P.O. Box 230 Vairico FL, 33595
Phone No.: 813.659.9197
Florida Board of Professional Engineers
Certificate Of Authorization No. 9813
LFS 12-30-13
Lyndon F. Schmidt, P.E. No. 43409

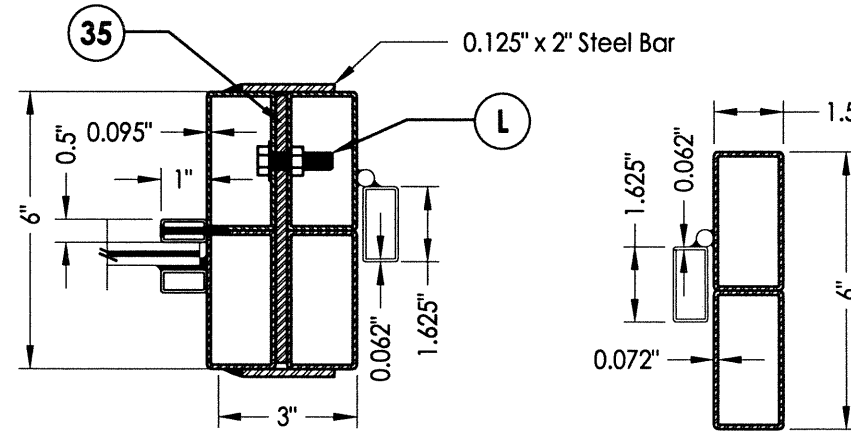
PRODUCT: CLARK HALL IRON DOORS		PART OR ASSEMBLY: FRAME ANCHORING	
DATE: 11/8/13		SCALE: N.T.S.	
DWG. BY: JK		CHK. BY: LFS	
DRAWING NO.: FL-16663.15		SHEET 10 OF 12	
NO.	DATE	BY	REVISIONS



31 Full Lite Door Panel
Active Hinge Stile

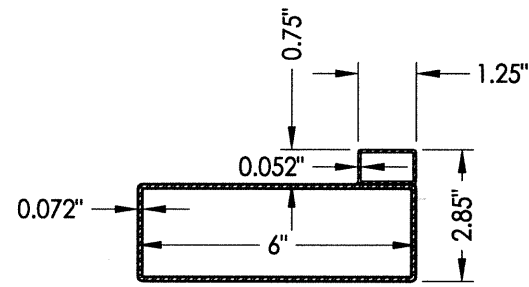


51 Sidelite Panel
Operable Sash Hinge Stile

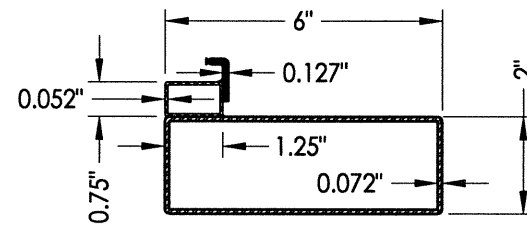


75 MULLION
Vertical with Direct Set Sidelite shown
(Horizontal Mullion Similar)

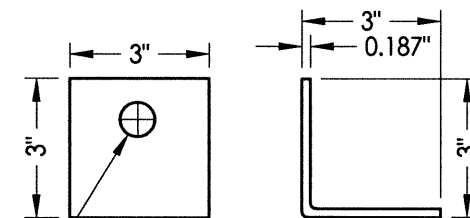
76 Jamb



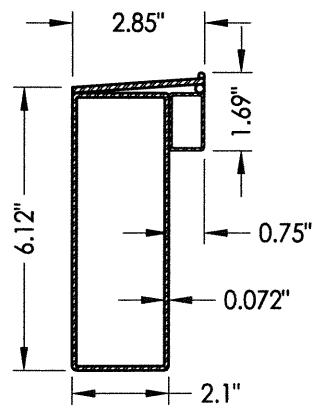
32 Full Lite Door Panel
Active Latch Stile



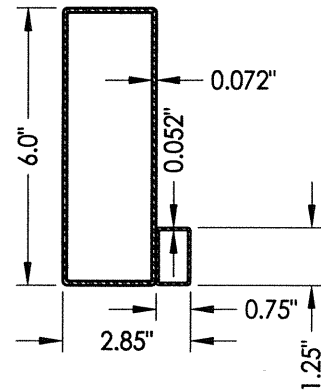
52 Sidelite Panel
Operable Sash Latch Stile



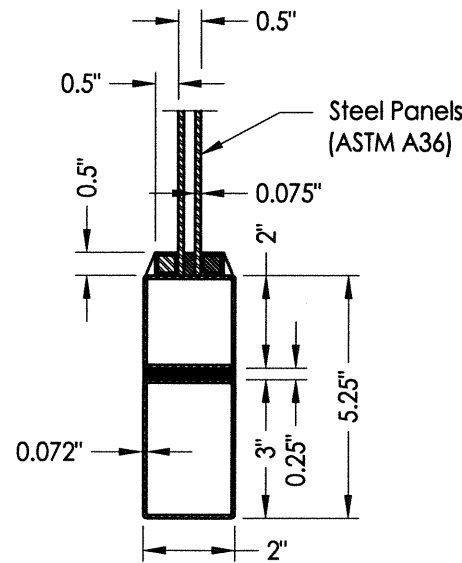
15 ANCHOR BRACKET



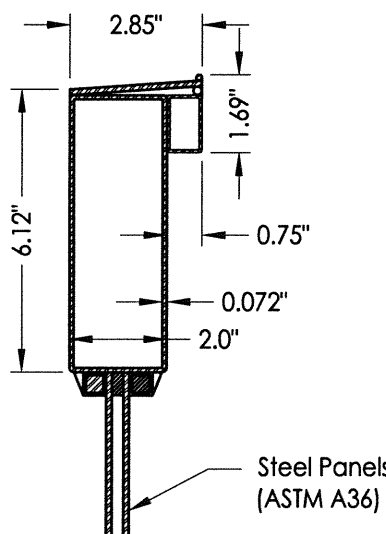
43 Full Lite Door Panel
Bottom Rail



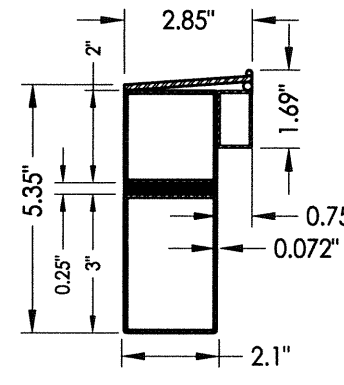
44 Full Lite Door Panel
Top Rail



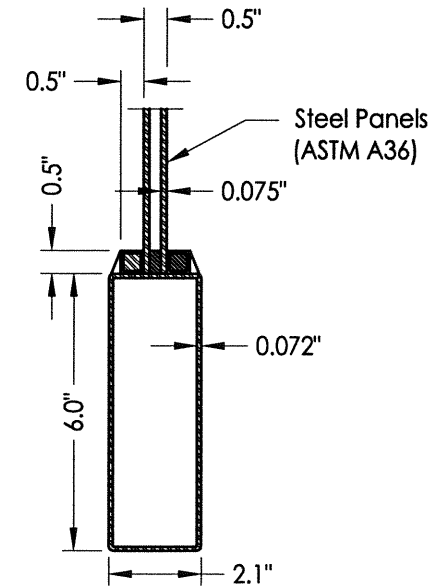
54 Bottom Rail
3/4 Lite Sidelite Panel



56 Mid Rail
3/4 Lite Sidelite Panel



53 Bottom Rail
Sidelite Panel



57 Bottom Rail
3/4 Lite Door Panel

PRODUCT:	CLARK HALL IRON DOORS
PART OR ASSEMBLY:	COMPONENTS

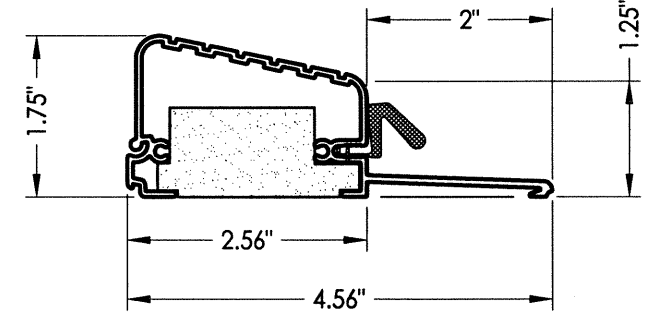
NO.	DATE	BY

DATE:	11/8/13
SCALE:	N.T.S.
DWG. BY:	JK
CHK. BY:	LFS
DRAWING NO.:	FL-16663.15
SHEET	11 OF 12

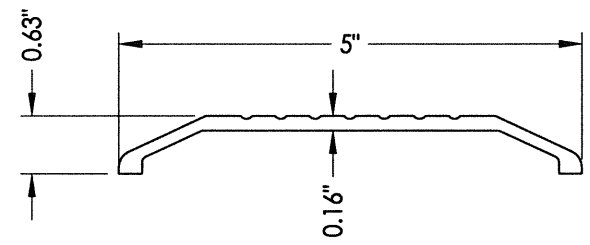
Documents Prepared By:
RW BUILDING CONSULTANTS, INC.
 P.O. Box 230 Valrico FL 33595
 Phone No.: 813.659.9197
 Florida Board of Professional Engineers
 Certificate Of Authorization No. 9813
 17012-30.13
 Lyndon F. Schmidt, P.E. No. 43409

BILL OF MATERIALS

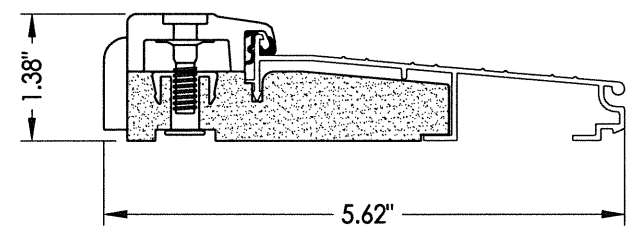
ITEM #	DESCRIPTION	MATERIAL
B	2X BUCK SG >= 0.55	WOOD
D	1/4" X 2-3/4" PFH ELCO OR ITW CONCRETE SCREW	STEEL
E	MASONRY - 3,000 PSI MIN. CONCRETE CONFORMING TO ACI301 OR HOLLOW BLOCK CONFORMING TO ASTM C90	CONCRETE
F	#10 X 3" PFH WOOD SCREW	STEEL
G	5/16" X 2-1/4" HH ELCO OR ITW CONCRETE SCREW	STEEL
H	5/16" X 2-1/4" PFH ELCO OR ITW CONCRETE SCREW	STEEL
J	3/16" X 2-1/4" PFH ITW CONCRETE SCREW	STEEL
K	5/16" X 2-3/4" PFH ELCO OR ITW CONCRETE SCREW	STEEL
L	5/16-18 X 1-1/2" HH BOLT (GR. 5) w/ LOCK WASHER & NUT	STEEL
M	3/8" X 3" HH LAG SCREW	STEEL
P	#12 X 1-1/2" HWH SMS	STEEL
1	SASH LATCH STRIKE	STEEL
2	SASH LATCH	STEEL
3	#8 X 1/4" PFH SMS	STEEL
4	WEATHERSTRIP (QLON)	FOAM
11	LATCH STRIKE PLATE	STEEL
12	#8 X 3/4" PFH SMS	STEEL
13	DEADBOLT STRIKE PLATE	STEEL
14	MORTISE STRIKE PLATE	STEEL
15	ANCHORING BRACKET	STEEL
17	#12-24 X 13/16" PFH COMBINATION WOOD/MACHINE SCREW	STEEL
20	FLIP BOLT	STEEL
25	#6 X 1/2" PWH SELF TAPPING SMS	STEEL
26	OUTSWING THRESHOLD (DLP)	ALUM/COMP
27	ADA THRESHOLD	ALUM
28	INSWING THRESHOLD (AFCO)	ALUM/COMP
29	DOOR SWEEP (w/ #8 x 3/4" SMS)	-
30	DOOR PANEL (FULL LITE)	-
31	HINGE STILE (ACTIVE DOOR)	ASTM A36 STEEL
32	LATCH STILE (ACTIVE DOOR)	ASTM A36 STEEL
35	MULLION REINFORCEMENT (1/4" X 6" STEEL BAR)	ASTM A36 STEEL
40	DOOR PANEL (3/4 LITE)	-
43	BOTTOM RAIL (FULL LITE)	ASTM A36 STEEL
44	TOP RAIL (FULL LITE)	ASTM A36 STEEL
45	DOOR PANEL HINGE	STEEL
50	SIDELITE PANEL W/ OPERABLE SASH	-
51	SIDELITE HINGE STILE	ASTM A36 STEEL
52	SIDELITE LATCH STILE	ASTM A36 STEEL
53	BOTTOM RAIL (SIDELITE PANEL)	ASTM A36 STEEL
54	BOTTOM RAIL (3/4 LITE SIDELITE PANEL)	ASTM A36 STEEL
55	3/4 SIDELITE PANEL W/ OPERABLE SASH	-
56	MID RAIL (3/4 LITE SIDELITE PANEL)	ASTM A36 STEEL
57	BOTTOM RAIL (3/4 LITE SIDELITE PANEL)	ASTM A36 STEEL
60	SASH LITE FRAME	STEEL
61	SASH HINGE	STEEL
75	VERTICAL MULL	ASTM A36 STEEL
76	JAMB	ASTM A36 STEEL



26 OUTSWING THRESHOLD
DLP



27 ADA THRESHOLD



28 INSWING THRESHOLD
AFCO

Documents Prepared By:
RW BUILDING CONSULTANTS, INC.
 P.O. Box 230 Valrico FL, 33595
 Phone No.: 813.659.9197
 Florida Board of Professional Engineers
 Certificate of Authorization No. 9813
 Lyndon F. Schmidt, P.E. No. 43409

PRODUCT: CLARK HALL IRON DOORS
 PART OR ASSEMBLY: BILL OF MATERIALS & COMPONENTS

NO.	DATE	BY	REVISIONS

DATE: 11/8/13
 SCALE: N.T.S.
 DWG. BY: JK
 CHK. BY: LFS
 DRAWING NO.: FL-16663.15
 SHEET 12 OF 12